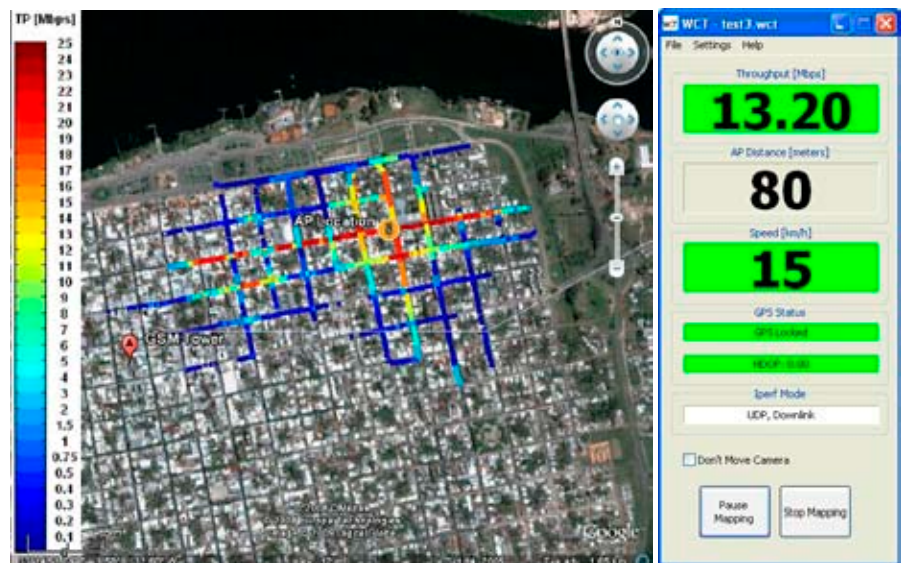


Wavion Introduces a New Coverage Tool for Service Providers enabling Optimization of Wi-Fi Coverage

Yoqne'am, Israel, Dec 23, 2008 – Wavion™, a company transforming the Metro and Rural Wi-Fi market with a new category of Wi-Fi Base Station, today announced the release of its new Wavion Coverage Tool (WCT) for optimizing Wi-Fi coverage.

The WCT enables wireless service providers to easily test the coverage of Wavion's WBS-2400 base stations in their actual locations. This takes the guessing game out of the planning and installation process and enables the service providers to measure the actual throughput at every point in the targeted area.

This valuable information enables service providers to optimize their site selection and network coverage. Moreover, it enables the service providers to optimize their marketing efforts in those areas where good coverage has been validated and to guarantee the performance levels at each of their customer locations.



Apart from Wavion's software, the WCT package includes off-the-shelf components such as GPS receiver, WiFi client, WiFi booster, and omni-directional car-roof antenna. The WiFi Booster enables simulating usage of outdoor CPEs. The WCT easy to use software provides coverage and capacity results per location and enables to display them over a Google earth map while driving or walking in the targeted area.

"We are proud to release this new tool for coverage optimization," said Dr. Mati Wax, Wavion's founder and CTO. "We have spent a lot of time and effort in developing this tool and making sure that it provides the most reliable and easy to use information for our customers. We believe that this tool will ensure smooth and cost effective deployments and provide yet another layer to Wavion's business case superiority."

Download Wavion Coverage tool www.wavionnetworks.com/WCT.html

About Wavion

Wavion is transforming the metro Wi-Fi and rural markets with a new category of spatially adaptive base stations. The company's digital beamforming and SDMA technologies are the first and only to resolve the significant performance, penetration and profitability challenges facing large scale metro and rural deployments. Wavion is privately held and backed by world-class investors including Tel Aviv-based Elron Electronic Industries Ltd. (NASDAQ: ELRN), and BRM Capital. Wavion headquarters are located in Yoqne'am, Israel and the company has offices in Sao Paulo, Brazil, Buenos Aires, Argentina, Jakarta, Indonesia and New Delhi, India. To learn more, please visit Wavion at www.wavionnetworks.com